

DESCRIPTION OF THE APPEARANCE OF IDEAL ADULT AFRIKANER CATTLE.

1. GENERAL APPEARANCE

1.1 GENDER AUTHENTICITY

1.1.1 The bull appears masculine and powerful, is large with a strong head and horn (optional); a deep, heavy, strong and powerful neck, with wide a developed dewlap which hangs in wrinkled folds; a large firm hump; long, deep well-muscled body; well formed breeding organs; four strong, well positioned legs with hard hooves; shiny, short coat, with clear darkening from the neck and front part of the hump.

1.1.2 The cow appears genuinely feminine, in balance with her environment in size and weight; smooth, shiny coat; well developed vulva; much narrower in the neck and face compared to the bull.

1.2. CONFORMATION

These cattle have oval shaped heads which appear “breed genuine; deep oval neck; deep oval chest, middle piece and buttocks. This gives an overall impression of a deep, oval shaped animal.

1.3. TEMPERAMENT

Alert and awake with a calm, quiet temperament and tame nature.

1.4. COLOUR

- a. **Studbook animals:** Red – all shades from light red to dark red; and white on and above the underline, red spotted and speckled and all shades of yellow and white.
- b. **Skin colour:** Amber – well pigmented

2. HEAD

- 2.1 **Shape:** Long, broad and full between the eyes with well developed orbital ridges. Wide Nasal Bone, fully adjoining the forehead with wide nostrils. Head must appear “breed genuine.”
- 2.2. **Mouth:** Big and wide with strong lips. The lower jaw is deep and well formed.
- 2.3 **Eye:** Large and brown, protected and hidden by a well developed orbital ridge, eye socket appears oval shaped, slight downward oblique and the front corner opens into a hair-free, clean, open tear front.
- 2.4. **Ears:** Medium in size and slightly pointed.
- 2.5 **Crown:** Curved, wide between the horns and tends to slightly incline backwards.
- 2.6. **Horns:** Optional
 - 2.6.1 Afrikaners may be dehorned.

3. FOREQUARTER

(The forequarter of the bull is more heavily developed than that of the cow)

- 3.1 **Neck:** Short, deep and oval with a steady joining at the head and shoulders; Top line of the neck is lower than the backline, **with strong developed neck muscles of the bull.**
- 3.2 **Dewlap:** Big and loose with wrinkles; starts in a V-shape under the chin and runs through to the front legs where it ends in a V-shape.
- 3.3 **Brisket:** Full, **sufficient width in the chest floor**, not too prominent.
- 3.4 **Shoulder Blades:** Broad, deep, well developed forearm muscle in the case of the bull - ; steadily adjoins the hump, chine and ribs.
- 3.5 **Hump:** **Bull:** Correctly placed on shoulder blades and sufficiently developed.
Cow: Not as prominent as that of the bull.
- 3.6 **Chine:** Broad and well covered with a gradual increase to the hump.

4. MIDDLE PIECE

- 4.1 **Form:** Long, deep and wide.
- 4.2 **Chest:** Deep, wide and full shoulder blades.
- 4.3 **Ribs:** Well sprung and deep.
- 4.4 **Back:** Broad and long – **with clear eye muscles by the bull**
- 4.5 **Loins:** Broad – with bulging muscles by the bull. **Cow strong musculature on the loins.**
- 4.6 **Naval:** **Neat and not too big.** If a line should be drawn from the front heel to the back heel, the naval should not be underneath this line.

5. HINDQUARTERS

(The cow's development of the hindquarter is more prominent than the forequarter)

- 5.1 **Form:** Broad, deep and long – with clear muscles in the case of the bull.
- 5.2 **Hips:** Broad and well covered
- 5.3 **Rump:** Long and broad with a slight fall towards the thurls and pin bones
- 5.4 **Pin Bones:** Widely placed
- 5.5 **Thurls:** Widely placed
- 5.6 **Thighs:** Broad, deep and full
- 5.7 **Topside:** Full.
- 5.8 **Tail:** Long, with broad tail setting which gradually becomes thinner until where it hangs under the heel and ends with a full tail switch. Tailsetting not too prominent.

6. LEGS & HOOVES

- 6.1 **Legs:** Oval shaped and dry. Correctly placed straight forelegs.
- 6.2 **Heels:** Broad and strong, rather prominent and wide apart, heel tendons well developed.
- 6.3 **Knees:** Broad and flat.
- 6.4 **Pastern:** Short and strong.
- 6.5 **Forearms:** Long – with clear muscle development in the case of the bull.
- 6.6 **Hooves:** Medium in size, oval shaped and deep, even and well suited with points forward.

7. REPRODUCTIVE ORGANS

7.1 **Scrotum & testes:** Testes are well developed, even in size and hang equal, must not hang too low. Sheath securely attached with small opening to the front.

Udder: Well developed, brown teat of medium length and thickness, relative width between each other and well developed vulva.

8. BALANCE

The lower parts of the body are in proportion and in their conjunction form a symmetrical whole. The wedge shape of the cow is heavier in the back than in the front. Older bulls are heavier in the forequarter.

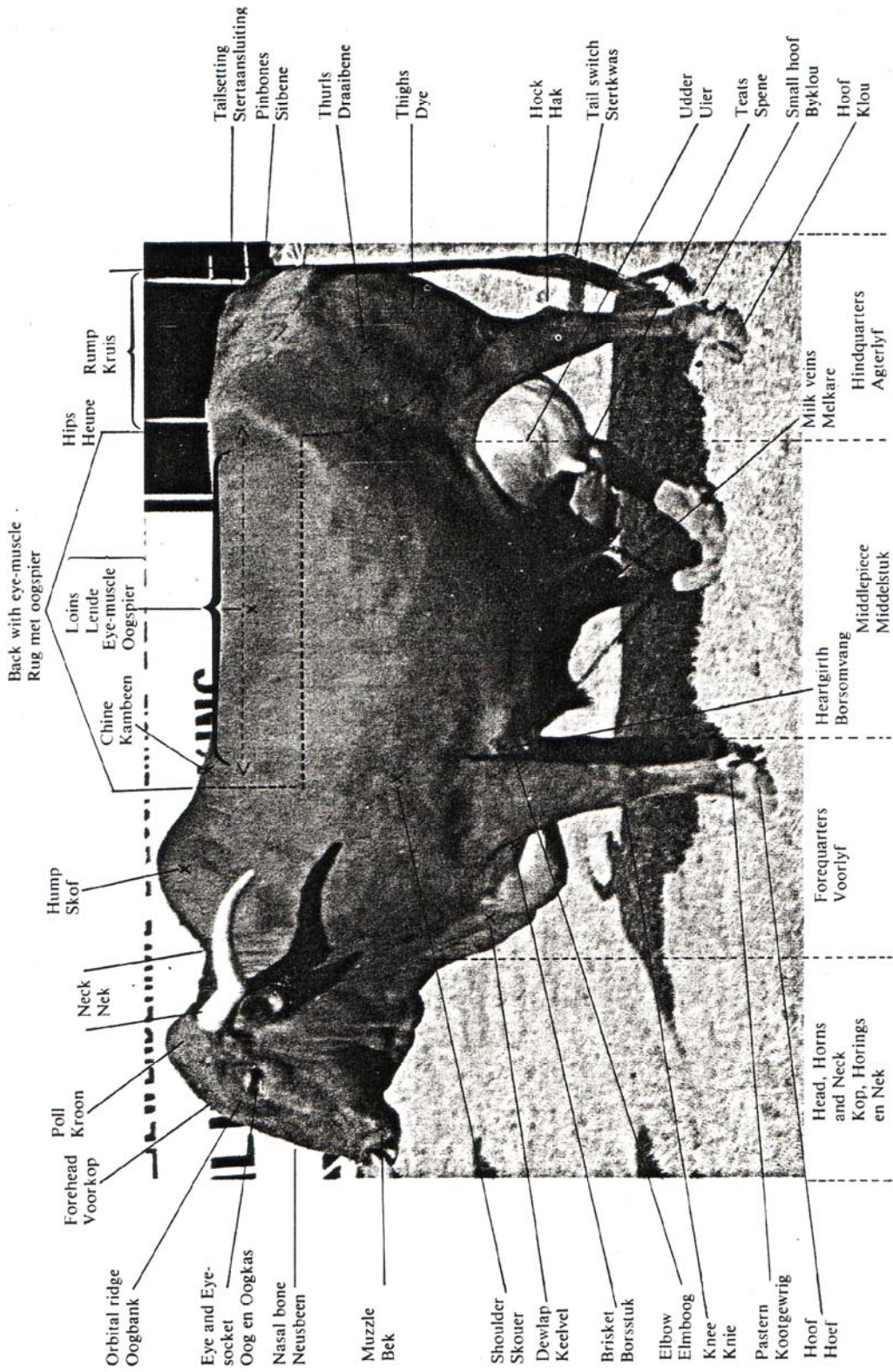
9. GENERAL

For its age the animal is comparative to the average of the better animals in their environment and well developed.

An ideal meat producer.

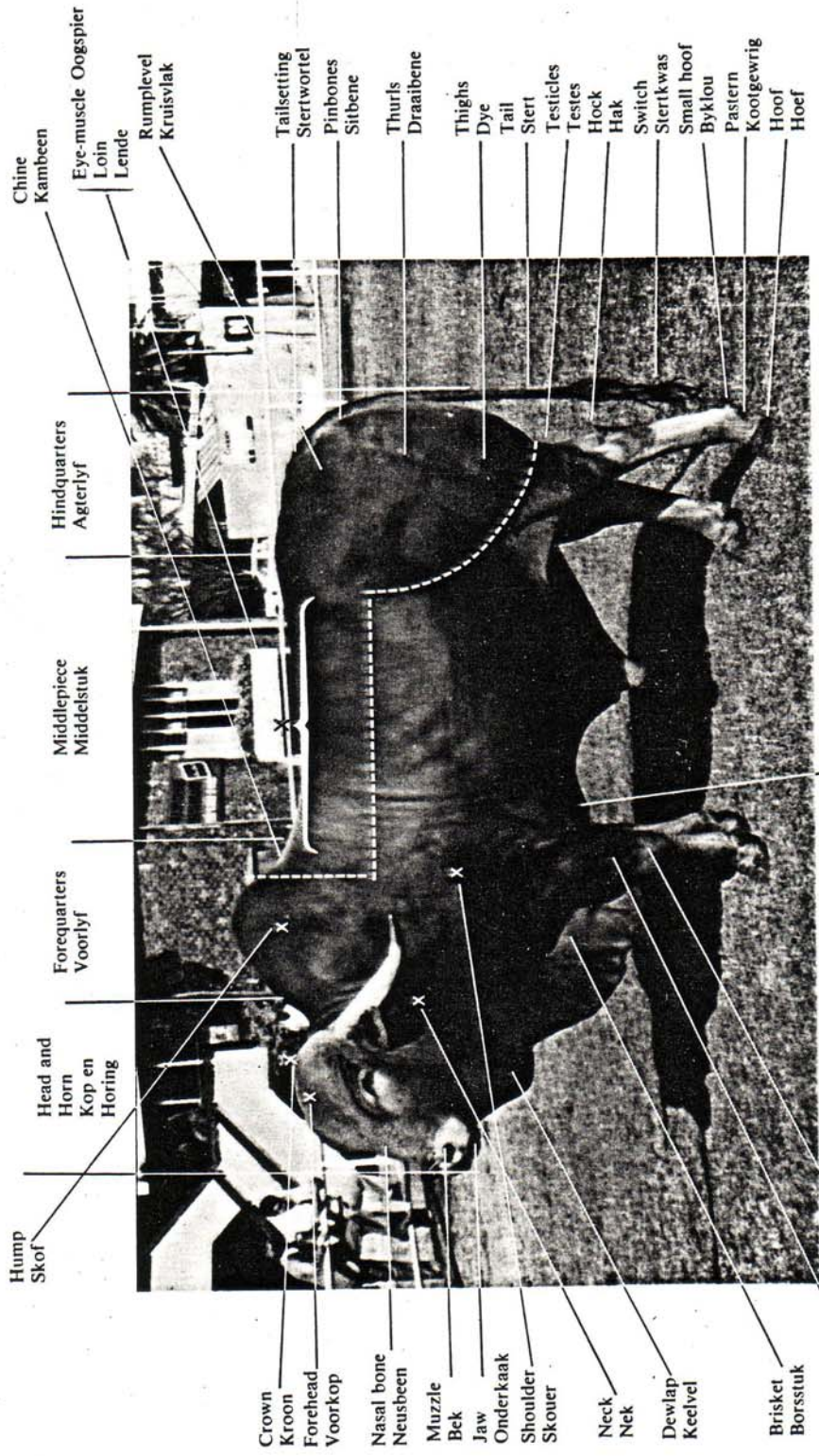
AN EXAMPLE OF AN AFRIKANER COW WITH DESCRIPTIVE HEADINGS

'N VOORBEELD VAN 'N AFRIKANERKOEI MET BESKRYWING VAN LIGGAAMSDELE



Die stippellyn verteenwoordig die oogspier, voorrib, primarib en lendestuk asook die kruisvlak (rump) en die res van die agterlyf, wat dan ook 38% van die karkasgewig en 52% van die geldwaarde van die karkas uitmaak.
 The dotted line shows the eye muscle, prime rib, sirloin, rump and hindquarters. This represents 38% of the carcass weight and 52% of the money earned for the carcass.

AN EXAMPLE OF AN AFRIKANER BULL WITH DESCRIPTIVE HEADINGS
VOORBEELD VAN 'N AFRIKANERBUL MET BESKRYWENDE LIGGAAMSDELE



Die stippellyn verteenwoordig die oogspier, voorrib, primarib en lendestuk asook die kruisvlak (rump) en die res van die agterlyf, wat dan ook 38% van die karkasgewig en 52% van die geldwaarde van die karkas uitmaak.
 The dotted line shows the eye muscle, prime rib, sirlain, rump and hindquarters. This represents 38% of the carcass weight and 52% of the money earned for the carcass.

Beskrywing van Afrikanerkoei op Agterkant/Description of Afrikaner cow on reverse side of this page